

## Quick Start Guide: LogET8 PTE Ultra Cold VFC Kit

### Contents

The VFC Kit includes an Elitech LogET8 PTE Ultra Cold Temperature Logger, wall mount, external probe, buffer bottle and NIST-traceable calibration certificate. The units' wall mount is part of the logger packaging. Use the two-sided sticky tape included in the packaging to attach the wall mount to your freezer door.

Place the buffer bottle with probe inside your freezer near the vaccine bottles/vials. The bottle's purpose is to mimic the conditions inside the vials themselves so that you do not register a false temperature excursion when the freezer door is opened but the ambient temperature of the vaccine itself does not warm as quickly as the air in the freezer.



**Note:** Place the buffer bottle in the freezer well before beginning to log the temperature to avoid a false excursion. *In ultra cold temperatures, the bottle requires approximately 3 hours to acclimate to the temperature in the freezer.*

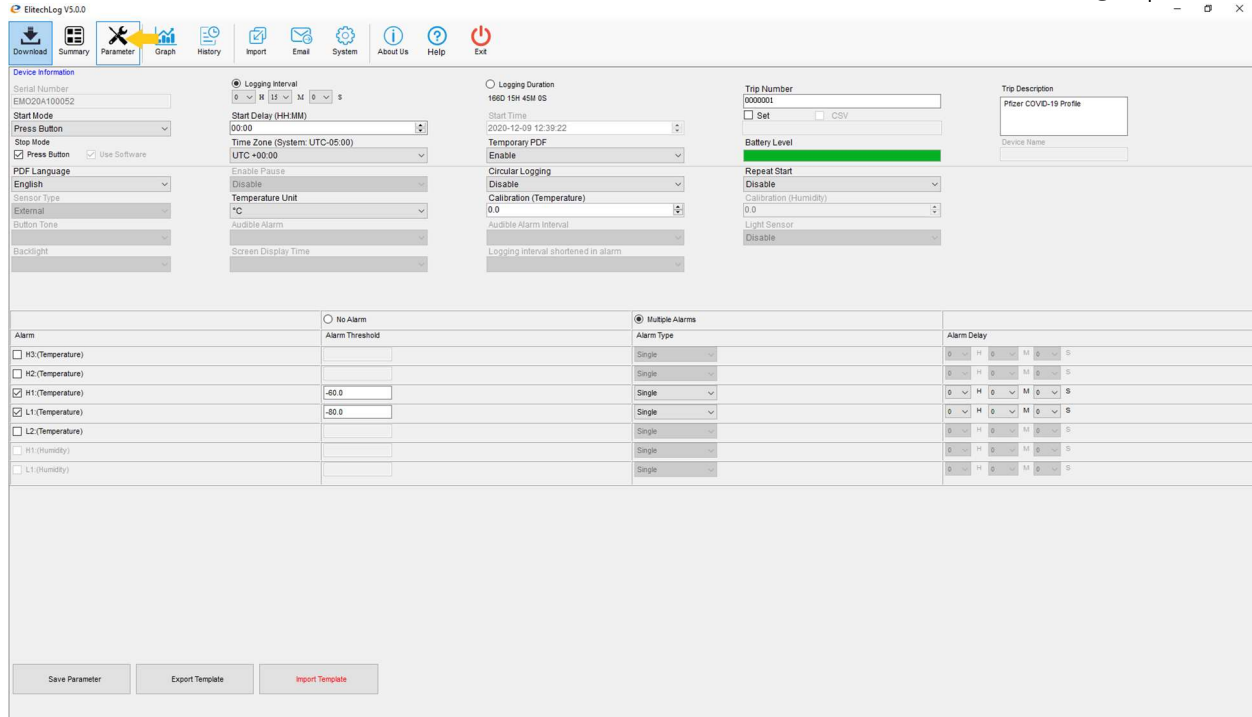
### Configuration

To configure your logger, first download and install the Elitech software here:

<https://www.elitechstore.com/pages/download>

Attach your unit to the computer by removing the plastic top and inserting the USB interface into your computer's USB port. In the Elitech program select the parameter's icon (shown below) in the top right of the screen. This loads the software configuration screen where you configure your unit including logging interval, excursion alarm thresholds, and temperature display settings.

Once you have chosen your configuration, click the "Save Parameter" button at the bottom of the screen to configure your logger. Once the configuration is saved, remove the logger from your computer. Make sure the logger is connected to its cable and the buffer bottle is placed in its monitoring environment before starting the unit.



For monitoring Pfizer’s COVID-19 vaccine, you can download and import a pre-configured profile from our website at <https://www.temprotect.com/docs/Elitech-Pfizer-Covid-19-profile.ecfg>.

Install this profile by clicking on the “Import Profile” button in the bottom right of the parameters screen and selecting the file. Once loaded you need only click the “Save Parameter” button with a unit connected to your software to configure that unit.

### Downloading Data

After connecting the logger to your computer, click the “Download” button in the top right corner of the screen. The system will download that collected data to your computer, to both a pdf file that can be printed as well as into the program itself where you can view the data in chart or spreadsheet format.